



European Union
European Structural
and Investment Funds



**Education & Skills
Funding Agency**

E-Bulletin

May 2020 Vol.6



WELCOME BACK...THIS E-BULLETIN FOCUSES ON DELIVERY PARTNER FEEDBACK.....WE WANT TO HEAR FROM YOU!!...

In the last two months, the COVID-19 emergency has set us unprecedented personal and organisational challenges. The response from HLC's delivery partners, in supporting disadvantaged learners has been outstanding, as numerous case study examples within our e-newsletters have demonstrated.



The learning curve has been a steep one, but our focus is returning to the longer-term delivery of programmes and HLC is now asking for your feedback in preparation for this. For example, what are the barriers, challenges, and opportunities your organisation and participants face? What are the key enablers for effective learning and skills support for disadvantaged groups?

As part of our planning for the future, we have been working with a student from the University of Hull to evaluate how technology has been used by Hull Community-led Local Development (CLLD) organisations to successfully support programme participants during the lockdown. We hope to extend the study's scope to help understand the contribution that on-line learning could make on all HLC's programmes in the future.

We will be asking for partners' views in one-to-one discussions and at our network meetings over the next 3-4 weeks and we look forward to hearing your feedback.

Andy Crossland,
CEO.



<https://www.hlc-vol.org/>



HULL TRAINING...

The YEI team at Hull Training and adult Education have been working hard to ensure their learners continue to be supported during this challenging time.

Tutors have converted their delivery into online courses, enabling learners to continue with their learning remotely.

They have created a wide range of Google classrooms for subjects including:

- An Introduction to Child Psychology
- Personal Growth and Development
- Employability
- CSCS
- Understanding Mental Health
- Maths and English
- General Life Skills
- Retail and Customer Services

Learners have access to a wide range of innovative resources including tutor videos and screencasts, and an online learner community, where tutors post weekly quizzes, stories, a question of the day and daily announcements. They have also ensured those learners without internet access have work posted home to them regularly. Participants are contacted weekly via phone calls, text messages and emails, and are offered a range of support, both pastoral and academic. All learners have individual action plans and tutors are assessing their work and feeding back weekly to ensure they keep on track.

Staff support....

To support the YEI team, a staff health and well-being Google classroom entitled 'Sacred Space' has been created. It has a wide range of resources for managing health and well-being. It includes good news stories, Reiki healing, models of reflection, meditation and visualisation techniques, links to useful websites and a daily uplifting quote.



**FREE
FLEXIBLE
ONLINE
COURSES**



Learn anytime, anywhere! > www.hcctraining.ac.uk



<https://www.hlc-vol.org/>



E-Bulletin

May 2020 Vol.6

Hull Training are also piloting HLC's new remote enrolment process so new learners, and learners who were about to be interviewed or inducted before the lockdown, can begin their studies, which is working well.

Learner feedback on remote delivery...

Rosie came to YEI so she could achieve qualifications to work in a school, as she wanted something that would fit around looking after her child. So far she has completed a Level 1 Award in Supporting Teaching and Learning, and has completed the Understanding Mental Health course, to better understand and support the children she aims to work with.

She is also studying Maths and Child Psychology and up until recently, she had also been attending a work placement at a local primary school and wants to return as soon as possible.

This is what Rosie said about her experience so far;



"I've found it a lot simpler than I thought it would be! I've received more than enough support. The materials were really interesting and it was good to get directed to lots of different high-quality resources made by professionals. I've really enjoyed all of the course."

Rosie is hoping to return to her work placement as soon as she can and is continuing her studies remotely with YEI. She hopes to progress onto the Level 2 Award in Supporting Teaching and Learning next, and continue to work towards achieving her Level 2 in Maths.

If you'd like more information about youth employment programmes for 16-29 year olds at Hull Training, please email YEI-HTAE@hullcc.gov.uk.



<https://www.hlc-vol.org/>



HLC'S THIS-ABILITY PROJECT....BESPOKE REMOTE DELIVERY FOR THOSE WITH DISABILITIES...

The This-Ability team are continuing to work with the learners on the project by still holding weekly sessions to enable their participants to complete their Employability Passports.

The mentors are providing resources and setting questions that are relevant to the Core Capability sessions, normally delivered in the classroom on a Wednesday and Thursday.

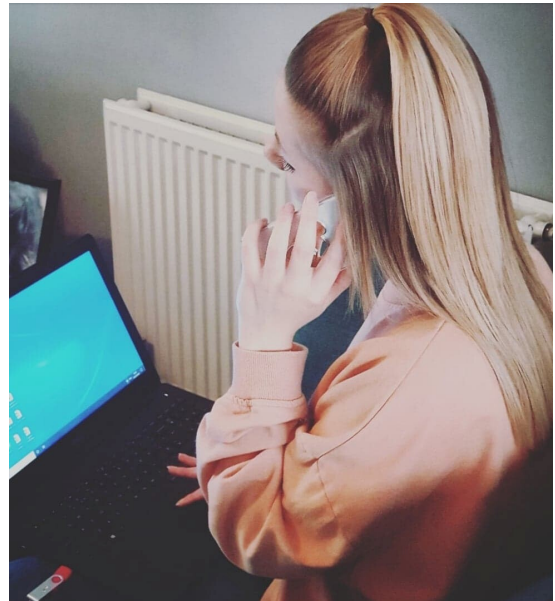
These questions are then sent through email, as some people do not like using video conference technology like Zoom. The mentors are also still providing one-to-one support when needed, for example having individual phone-calls to support learners while completing their work or to answer any questions they may have.

Various methods of teaching are being used to keep learners engaged, for example; setting tasks and challenges through the week on the This-Ability Facebook page, directing them to resources on the HLC website, such as, Think Employment, Barclay's Life Skills, National Careers Service, BBC Skillswise and also using a variety of TED talks, which are free, online presentations to share ideas, inspire and motivate people.

Mentors are currently adapting the usual classroom sessions to be able to deliver them online. This is so the learners are still given opportunities to demonstrate skills within their passport.

This-Ability have also created a discretionary fund for learners. This allows them to apply for things that may help them with learning and coping during the lockdown, such as craft items or IT equipment (tablets to complete their work on).

For more information about This-Ability please email the team at this-ability@hlc-vol.org.



<https://www.hlc-vol.org/>

